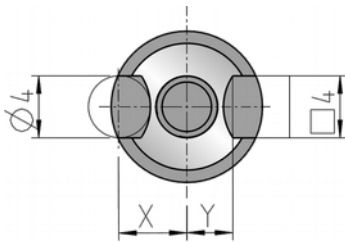


## Anti-rotation locking system

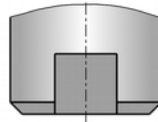
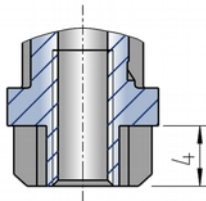
### Installation instruction - Anti-rotation locking system

The insert can be secured against inadvertent rotation by a parallel pin and key system. In most cases the gate insert is adequately secured by the bolt.

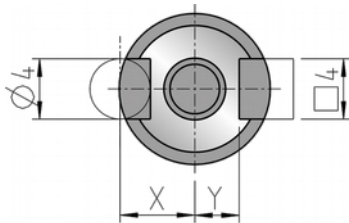
### New anti-rotation locking system



| Abstandstabelle Verdrehsicherung<br>Anti-rotation locking system dimensions |                         |                     |
|---|-------------------------|---------------------|
| Artikel Nr.   | Abstand Zyl.Stift X     | Abstand Passfeder Y |
| Article No.   | Parallel pin distance X | Key distance Y      |
| GTR 10  | 4,5 mm                  | 3,0 mm              |
| GTR 12  | 5,2 mm                  | 3,8 mm              |
| GTR 14  | 6,0 mm                  | 4,5 mm              |



### Old anti-rotation locking system



| Abstandstabelle Verdrehsicherung<br>Dimensions Anti-rotation locking system |                           |                       |        |
|---|---------------------------|-----------------------|--------|
| EXAflow Typ   | Abstand Zyl.Stift „X“     | Abstand Passfeder „Y“ | Breite |
| EXAflow type  | Parallel pin distance „X“ | Key distance „Y“      | Widht  |
| GTR 10  | 5,0 mm                    | 3,0 mm                | 6,0 mm |
| GTR 12  | 6,0 mm                    | 4,0 mm                | 7,0 mm |
| GTR 14  | ----                      | ----                  |        |

