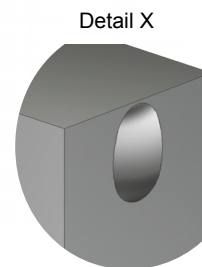
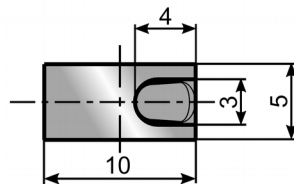
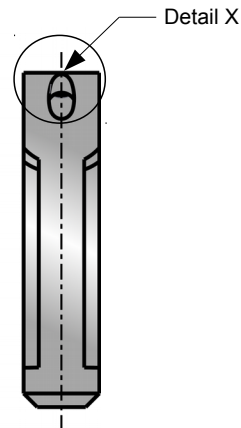
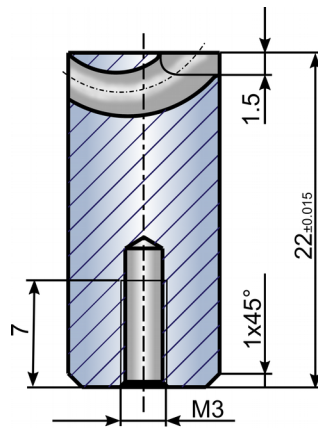
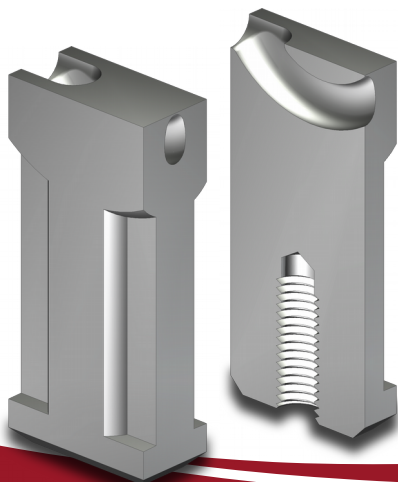


GTM - closed gate diameter



For tunnel gating of small, thin-walled moldings. This gate insert has a closed gate diameter and is therefore suitable for the use of low article weight and for very thin-walled moldings.

- The closed surface enables the creation of individual gate diameter.
- Usable for all thermoplastics including fillers up to 50 % glass fibre.



Dimensions: 10x5x22 mm
Material: 1.4028 (420W)