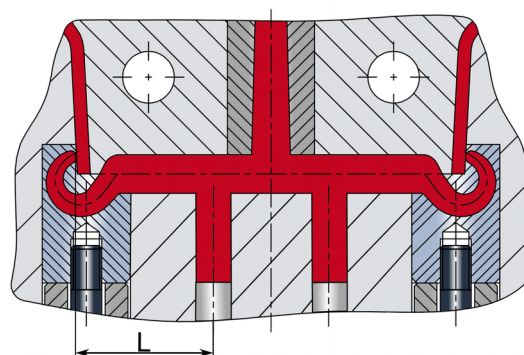
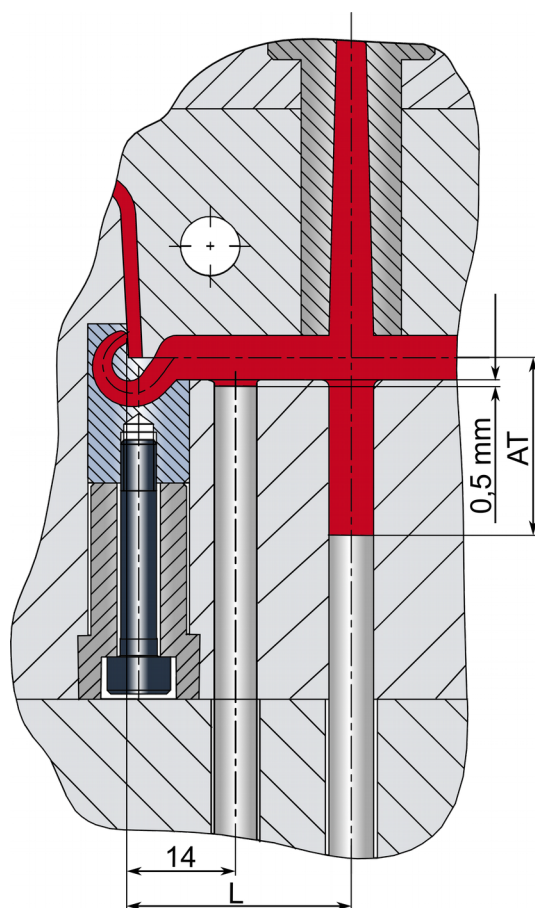


Installation dimensions Ringelflow[®] - GRF

Technical information

Recommended distances "L" from the injection point to the sprue ejector are given above for the various material groups.

The distance "AT" describes the correlated ejector depth.



Kunststoffgruppe Plastic group	GRF
HD-PE, LD-PE, PET, PP, PA, PC, PVC. (L)	>30
Kanalausführung Runner design	rund round
Auswerftiefe (AT) Ejector depth (AT)	>30
ABS, M ABS, ASA, PS, PC/ABS, POM, PBT. (L)	>30
Kanalausführung Runner design	rund round
Auswerftiefe (AT) Ejector depth (AT)	>30
Elastomere TPE, TPU, TPP, TPA. (L)	>20
Kanalausführung Runner design	beliebig arbitrary
Auswerftiefe (AT) Ejector depth (AT)	>20
Spröde Kunststoffe (L) Brittle plastics	auf Anfrage on request
Kanalausführung Runner design	halbrund half-round
Auswerftiefe (AT) Ejector depth (AT)	auf Anfrage on request